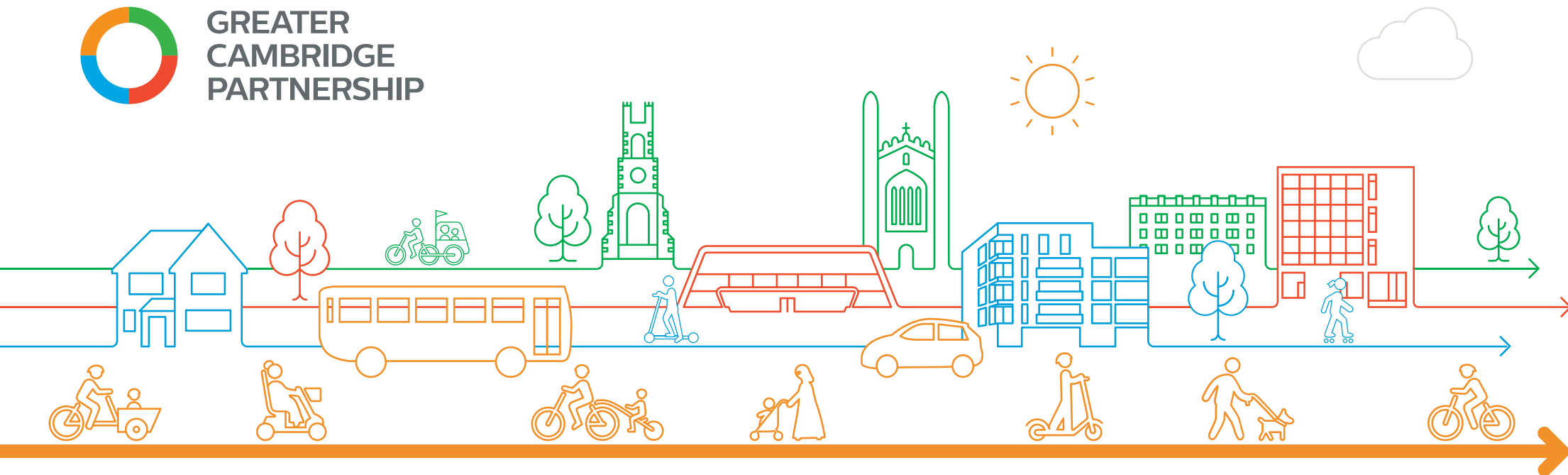




GREATER
CAMBRIDGE
PARTNERSHIP



Newmarket Road travel hub consultation 2025

We want your views to shape our new travel hub
Monday 8 September – Monday 3 November 2025

www.greatercambridge.org.uk/cea-travelhub





How did we get here?

We want your views on the facilities and features our travel hub should offer to best serve the community.

In 2023, we consulted on location options for relocating the existing Park and Ride to a new site. Based on feedback, our Executive Board approved progressing with a new site off Airport Way (site P1).

This project is part of the Cambridge Eastern Access programme – one of four corridor schemes improving connectivity across Greater Cambridge.

In October 2024, our Executive Board agreed to move forward with the design and planning application.

More information on the site selection process is available on our website.

Why do we need it?

A larger travel hub is needed to support Cambridge’s sustainable growth and rising travel demand; its increased capacity will help people complete journeys by bus, bike, or on foot.

The new site, near the Newmarket Road and Airport Way junction, offers easier access from the A14 and potential for new bus links to the Cambridge Biomedical Campus and city centre.

The existing Newmarket Road Park and Ride is on leased land within the Marleigh development, which is safeguarded for future development in the adopted and emerging Local Plans.

If the proposed airport redevelopment goes ahead, buses could also use a new busway through the site to reach key destinations.

What are we proposing?

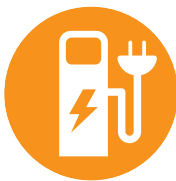
What is a travel hub?

A travel hub is a central place where people can easily connect between different ways of getting around, including buses, cycles, and walking. The hub is designed to make everyday travel smoother and more accessible for all users.



Double the car parking

Our proposed new travel hub would have approx 1800 parking spaces, double the number at the current site.



Sustainability

There will be charging facilities for electric vehicles, and the site has been designed to provide flexibility.



New cycle parking

The new site will have approximately 200 cycle parking and storage facilities, and space for cycle/scooter hire schemes.



Buses and coaches

The site will provide a bus interchange with sufficient bus stops to accommodate future demand as well as facilities for coach parking.



Passenger facilities

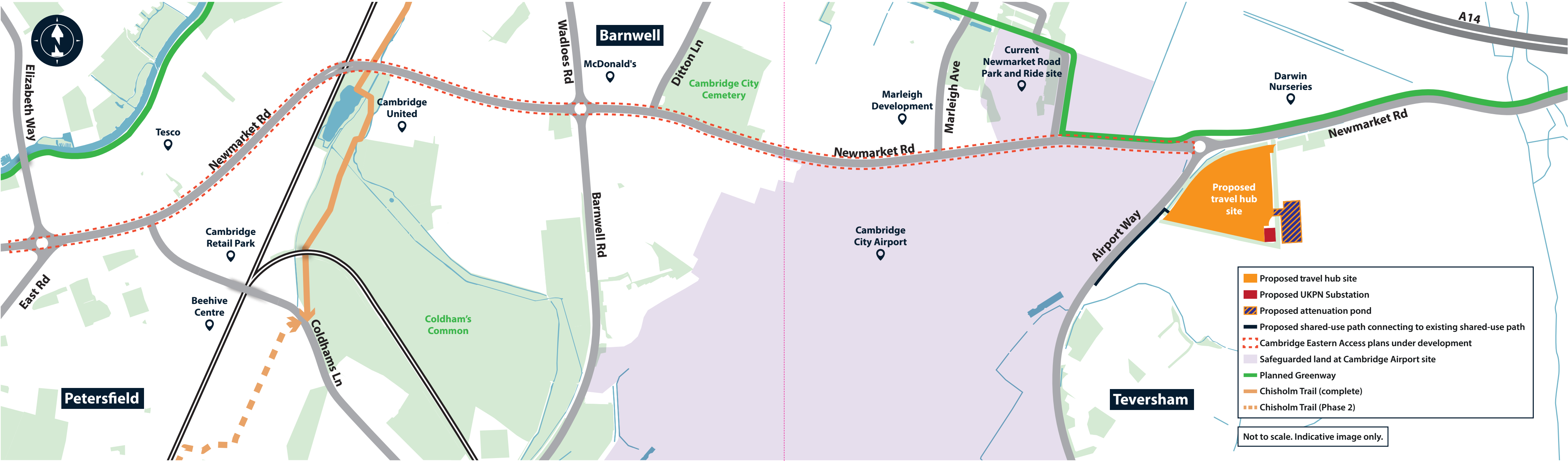
Our travel hub building will have a designated waiting area, toilet facilities, and real time travel information.



Connectivity

Access to the site walking and wheeling will be provided by crossings on Airport Way and Newmarket Road and an extended shared-use path to Teversham.

Newmarket Road – proposed travel hub location





Travel hub benefits

- **Better travel choices** – attractive options for walking, wheeling, cycling, and bus travel.
- **Improved connectivity** – links to greenways, the Chisholm Trail, Newmarket Road, and better access from the east.
- **Stronger bus connections** – potential new services to key destinations such as the Cambridge Biomedical Campus, city centre, and railway station.
- **Supporting growth** – increasing transport capacity to meet the rising travel demand and support Cambridge's economy.

Travel hub access

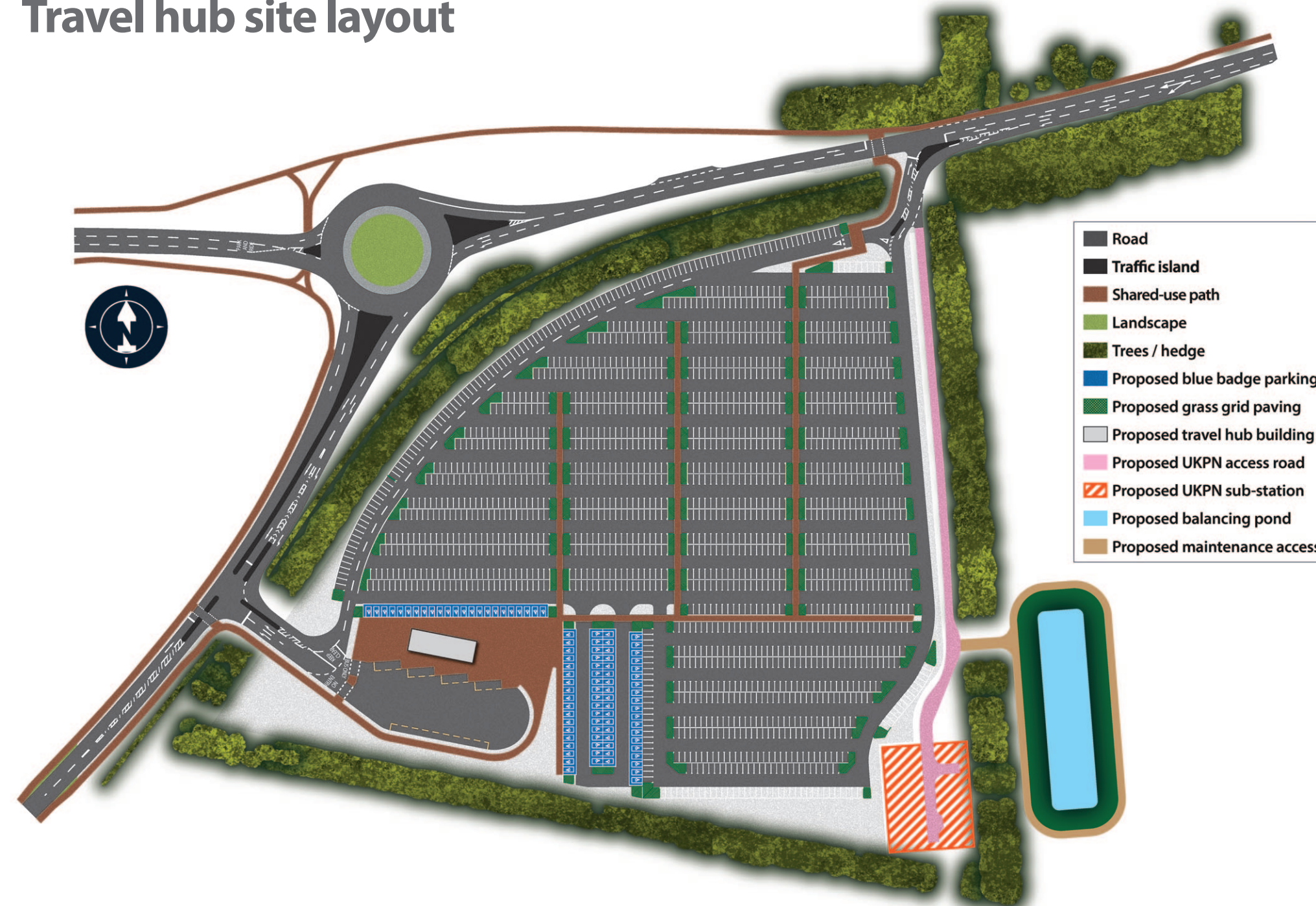
A new signal-controlled junction is proposed on Newmarket Road, allowing vehicles from the east to turn left into the site and right when leaving. It would also provide a pedestrian and cycle crossing for safer walking and cycling.

Another signal-controlled junction with a pedestrian and cycle crossing is planned on Airport Way, with two access options:

- Option A** All movements permitted except turning right into the site. Northbound drivers would need to use the Airport Way / Newmarket Road roundabout to access the site.
- Option B** All movements permitted: northbound drivers could turn right directly into the travel hub.

The site is screened by mature trees and hedgerows, reducing visual impact.

Travel hub site layout



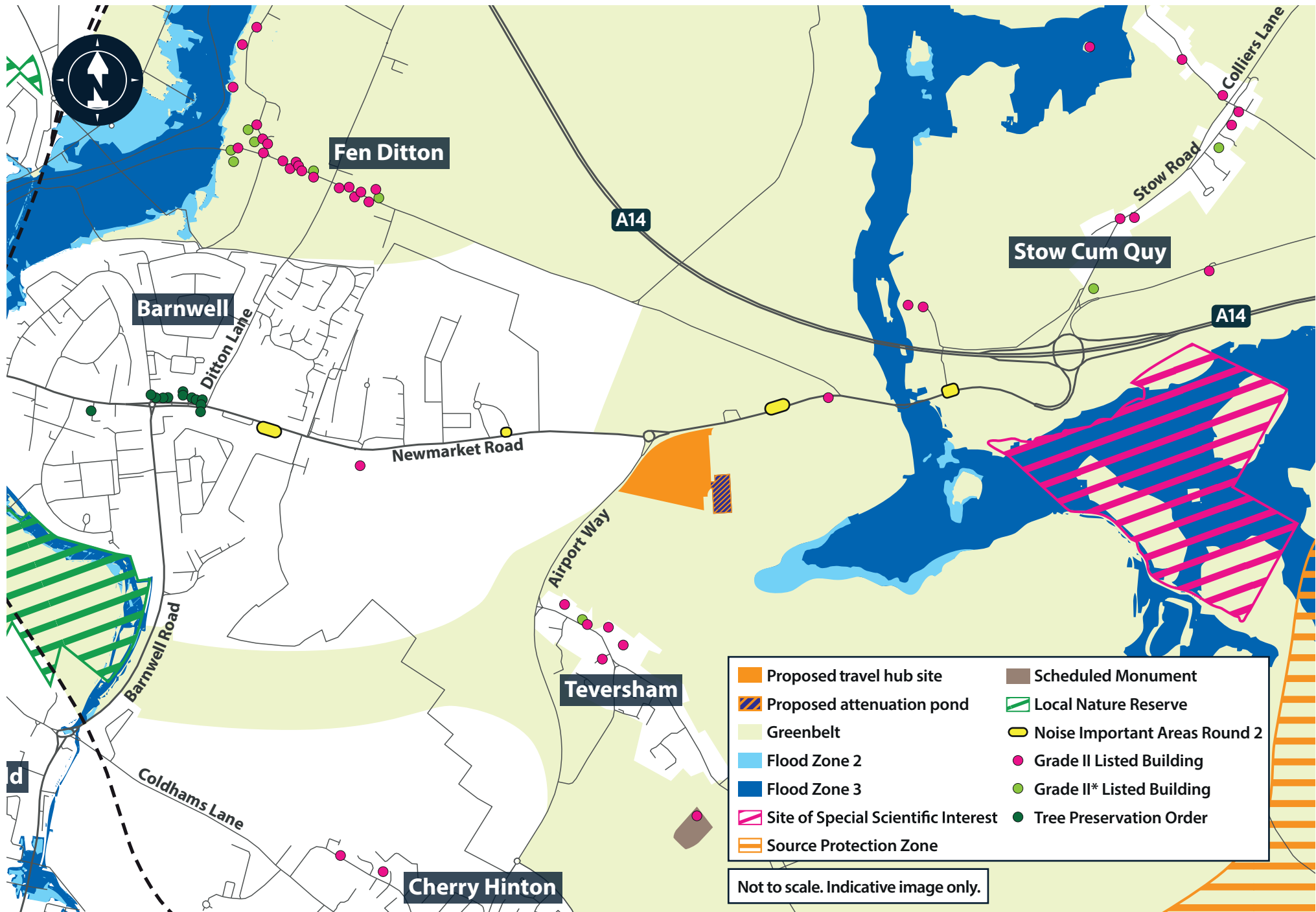
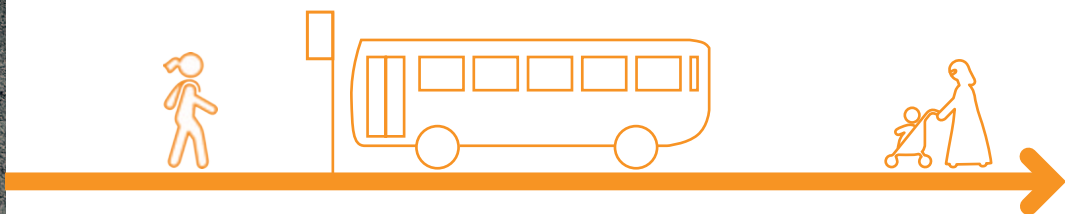


Environmental impact

An Environmental Impact Assessment (EIA) will be carried out for the proposed scheme to provide a clear and structured way of identifying and assessing any likely significant environmental effects - both positive and negative.

The EIA is an ongoing process that runs alongside the design of the proposals, so that environmental considerations can help shape the design as it develops. This approach helps make sure that chances to avoid, reduce, or offset environmental impacts are spotted early and, where possible, built into the design of the new travel hub. Topics covered will include ecology, heritage, carbon, and greenhouse gases.

The map to the right outlines the environmental features found surrounding the site. The features identified include Grade II and Grade II* listed buildings located within Teversham village to the south of the site and Wilbraham Fens Site of Special Scientific Interest to the east.



Links to other projects

GCP greenways

A network of safer routes connecting local villages, schools, and green spaces to Cambridge by bike or on foot:

Bottisham Greenway – Links Bottisham Village College, Fen Ditton Primary School, the Marleigh development, and the travel hub to Ditton Meadows, Stourbridge Common, and the Riverside.

Fulbourn Greenway – Provides a route between Fulbourn, Cherry Hinton, and the city’s shops and facilities.

Horningsea Greenway – Improves access to Fen Ditton, local businesses, leisure, and the river.

Swaffhams Greenway – Connects Stow-cum-Quy to Bottisham and the city via key green spaces and the Newmarket Road Park and Ride.

Learn more: www.greatercambridge.org.uk/greenways



Chisholm Trail

A mostly off-road, traffic-free route linking Cambridge and Cambridge North railway stations. It connects key sites including business parks, Addenbrooke’s Hospital, and the Cambridge Biomedical Campus, with links to Hills Road via Station Road.

More info: www.greatercambridge.org.uk/chisholm-trail

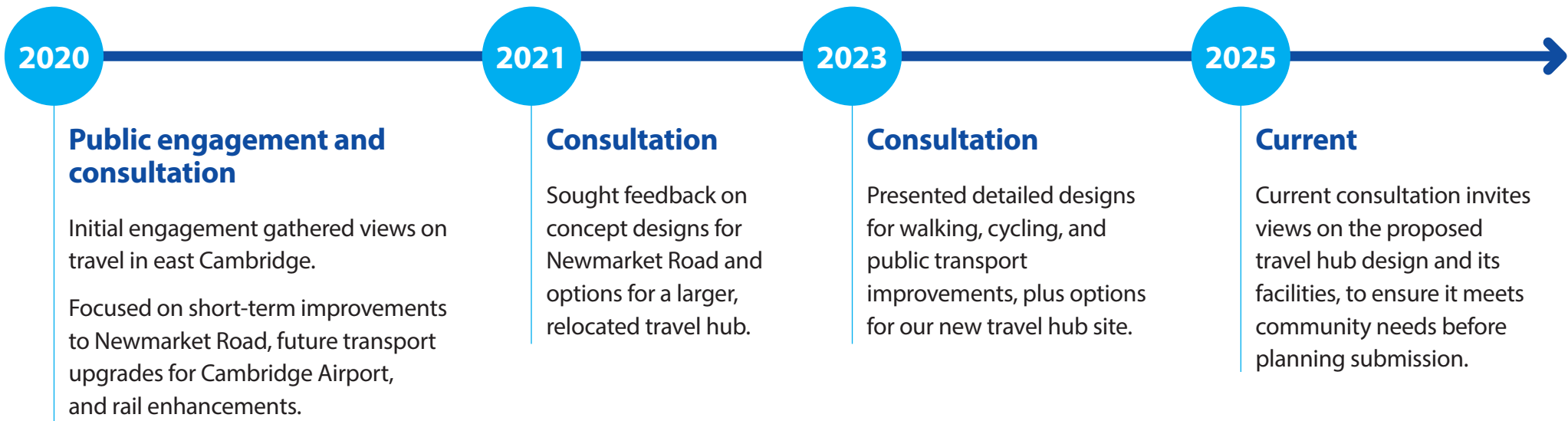
Electricity substation at travel hub

Part of the site has consent for a new substation, which UK Power Networks will build ahead of travel hub construction. This supports Cambridge’s transition to cleaner energy and future demand by strengthening the local power supply.

Greater Cambridge Local Plan

Cambridge City Council and South Cambridgeshire District Council have committed to work together to prepare a new local plan for Greater Cambridge. The Greater Cambridge Local Plan is due to be adopted by December 2026.

How did we get here?



Next steps

Your feedback is essential in helping us refine our designs to ensure they best suit the needs of our community.

The construction phase is due to start in 2027 following submission of a planning application, completion of the detailed design and appointment of a contractor. However, this is subject to approvals.



Tell us your views

The consultation will run until midday on
Monday 3 November 2025.

There are a number of ways to respond and provide feedback:



Fill out the online questionnaire at:
www.greatercambridge.org.uk/cea-travelhub

Request a paper questionnaire and return to:

Greater Cambridge Partnership
PO Box 1493
Mandela House
4 Regent Street
Cambridge CB1 0YR

Events

We will be holding two consultation events:



Virtual Teams event

Date: 9 October 2025
Time: 5:30pm – 7:30pm



In person drop-in event

Venue: Newmarket Road Park and Ride,
Newmarket Road, Cambridge CB5 8AA
Date: 14 October 2025
Time: 3pm – 8pm

Please register online for the virtual Teams event at:
www.greatercambridge.org.uk/cea-travelhub

Get in touch



hello@greatercambridge.org.uk



01223 699906



@greatercambs
#CEA2025



@greatercambs

If you require a hard copy of any documentation in large print, Braille, audio tape or in another language please email hello@greatercambridge.org.uk or call 01223 699906.